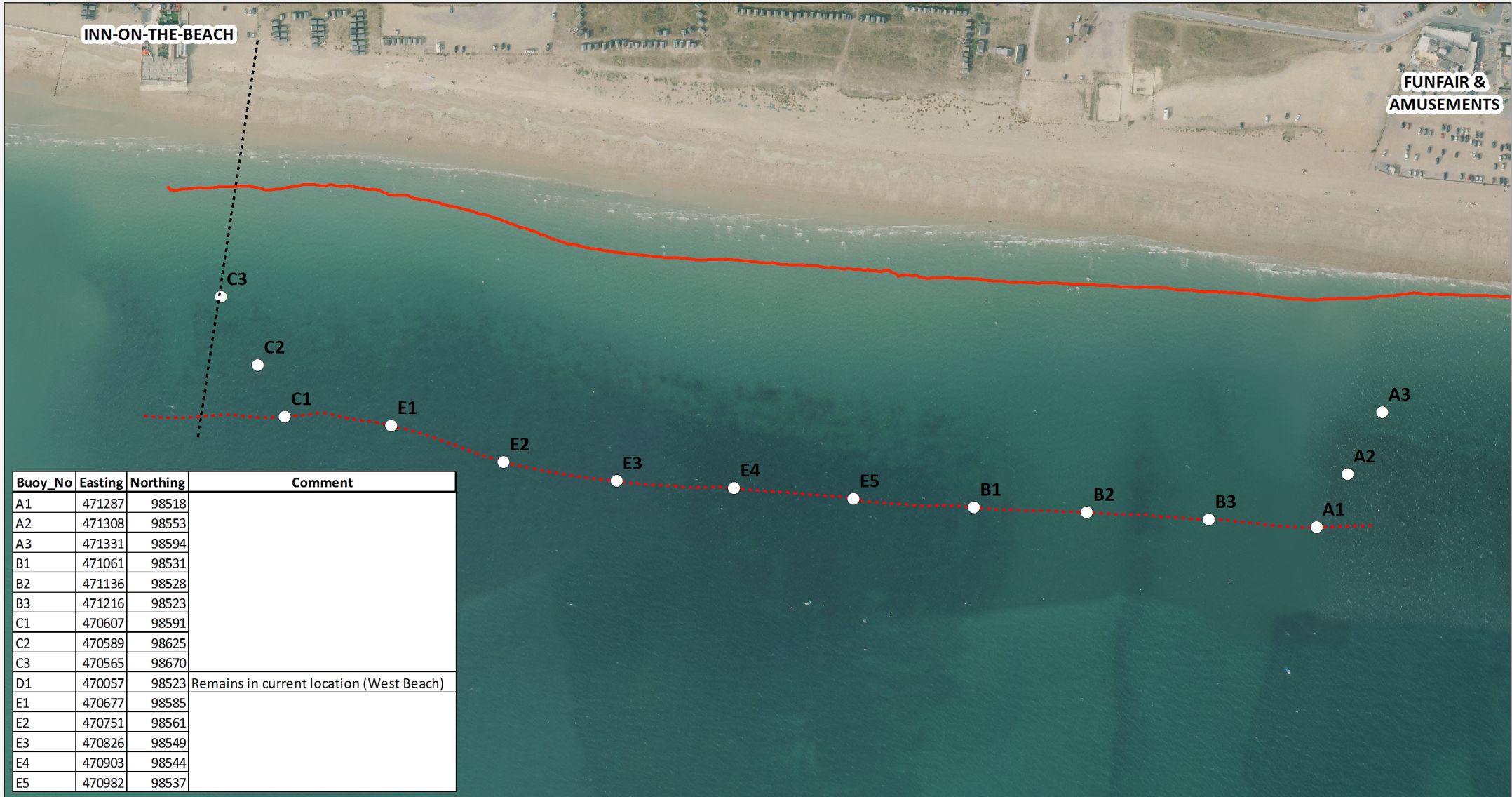


Buoyed area for swimming, Hayling Island



HAYLING ISLAND

- Mean Low Water Spring (-1.84mOD)
- - - - - 150m seaward of MLWS contour
- New buoy locations (using existing buoys)
- - - - - Western extent of Bathing Zone, allowing for launching to east of Inn on the Beach for wind surfing

Aerial Photography:
Courtesy of Channel Coastal Observatory (2016)

