

AECOM

PROJECT
 Partnership for South Hampshire
 Strategic Flood Risk Assessment

CLIENT
 Portsmouth City Council on behalf of
 Havant Borough Council

CONSULTANT
 AECOM Limited
 Sunley House
 4 Bedford Park
 Croydon, CR0 2AP
 www.aecom.com

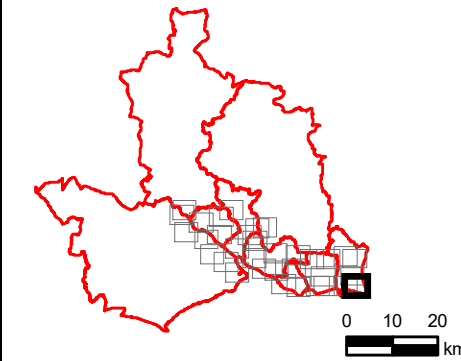
LEGEND

- Local Authority Boundary
- Hayling Island Model Extent

**Maximum Flood Depth: Undefended
 1 in 200 Year (0.5% AEP) 2122 Upper
 End**

- 0.0 - 0.1
- 0.1 - 0.5
- 0.5 - 1.0
- 1.0 - 1.5
- 1.5 - 2.0
- 2.0 - 2.5
- 2.5 - 5.0
- >5.0

OVERVIEW



NOTES
 © Environment Agency copyright and/or
 database right 2022.
 Reproduced from Ordnance Survey digital
 map data © Crown copyright 2022. All rights
 reserved. Licence number 0100031673.

This map is intended to provide a strategic
 overview and should not be used to assess
 individual properties. Refer to the
 accompanying SFRA Report for details of the
 datasets and purpose of their use.

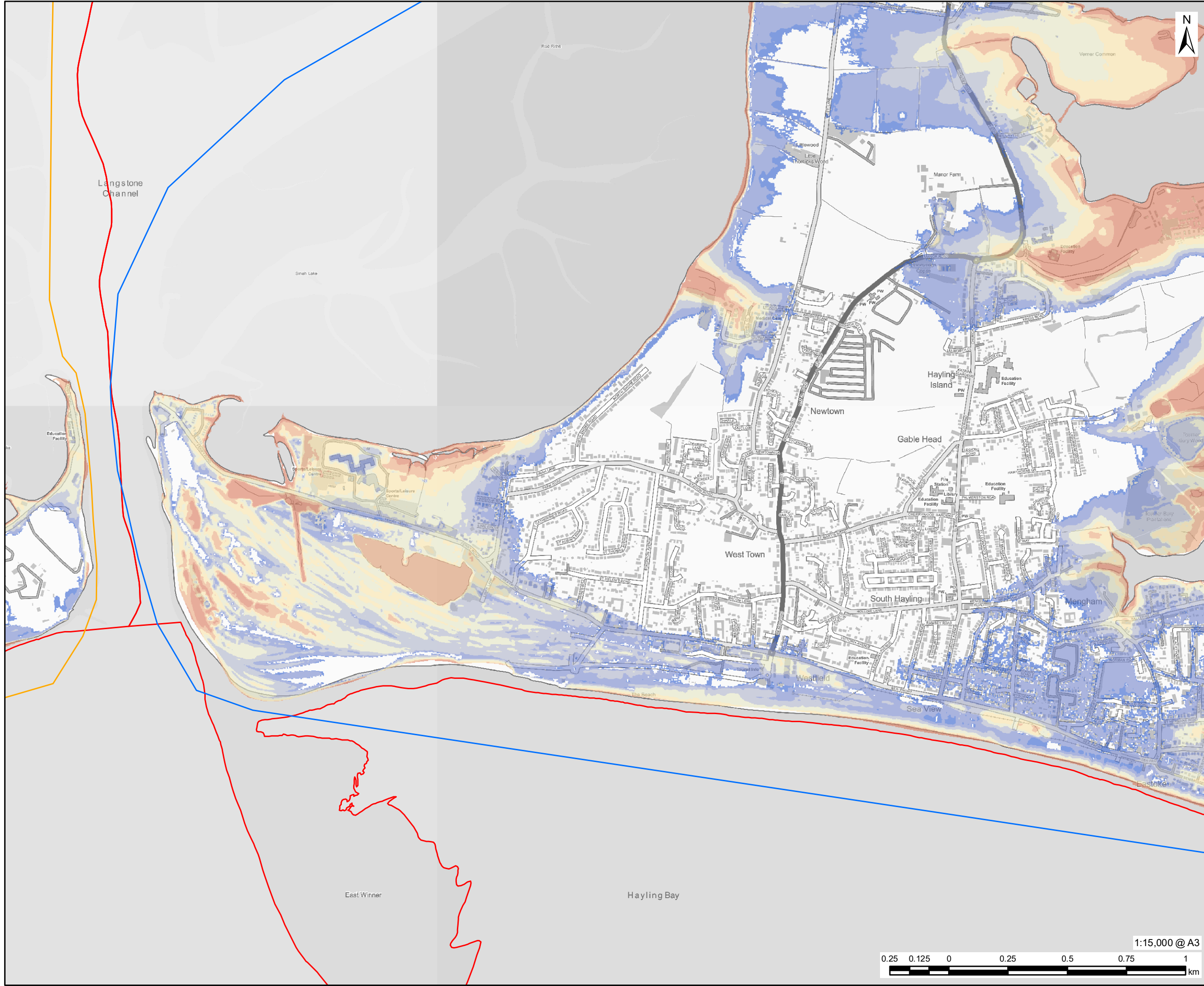
ISSUE PURPOSE
 For Information

PROJECT NUMBER
 60653132

FIGURE TITLE
 Maximum Flood Depth: Undefended 1
 in 200 Year (0.5% AEP) 2122 Upper
 End
 Sheet 1 of 5

FIGURE NUMBER
 Figure 8





AECOM

PROJECT
Partnership for South Hampshire
Strategic Flood Risk Assessment

CLIENT
Portsmouth City Council on behalf of
Havant Borough Council

CONSULTANT
AECOM Limited
Sunley House
4 Bedford Park
Croydon, CR0 2AP
www.aecom.com

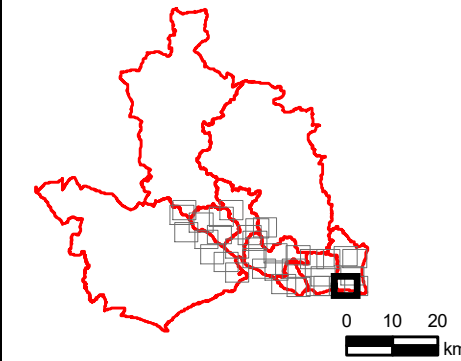
LEGEND

- Local Authority Boundary
- Portsmouth Model Extent
- Hayling Island Model Extent

**Maximum Flood Depth: Undefended
1 in 200 Year (0.5% AEP) 2122 Upper
End**

	0.0 - 0.1
	0.1 - 0.5
	0.5 - 1.0
	1.0 - 1.5
	1.5 - 2.0
	2.0 - 2.5
	2.5 - 5.0
	>5.0

OVERVIEW



NOTES
© Environment Agency copyright and/or
database right 2022.
Reproduced from Ordnance Survey digital
map data © Crown copyright 2022. All rights
reserved. Licence number 0100031673.

This map is intended to provide a strategic
overview and should not be used to assess
individual properties. Refer to the
accompanying SFRA Report for details of the
datasets and purpose of their use.

ISSUE PURPOSE
For Information

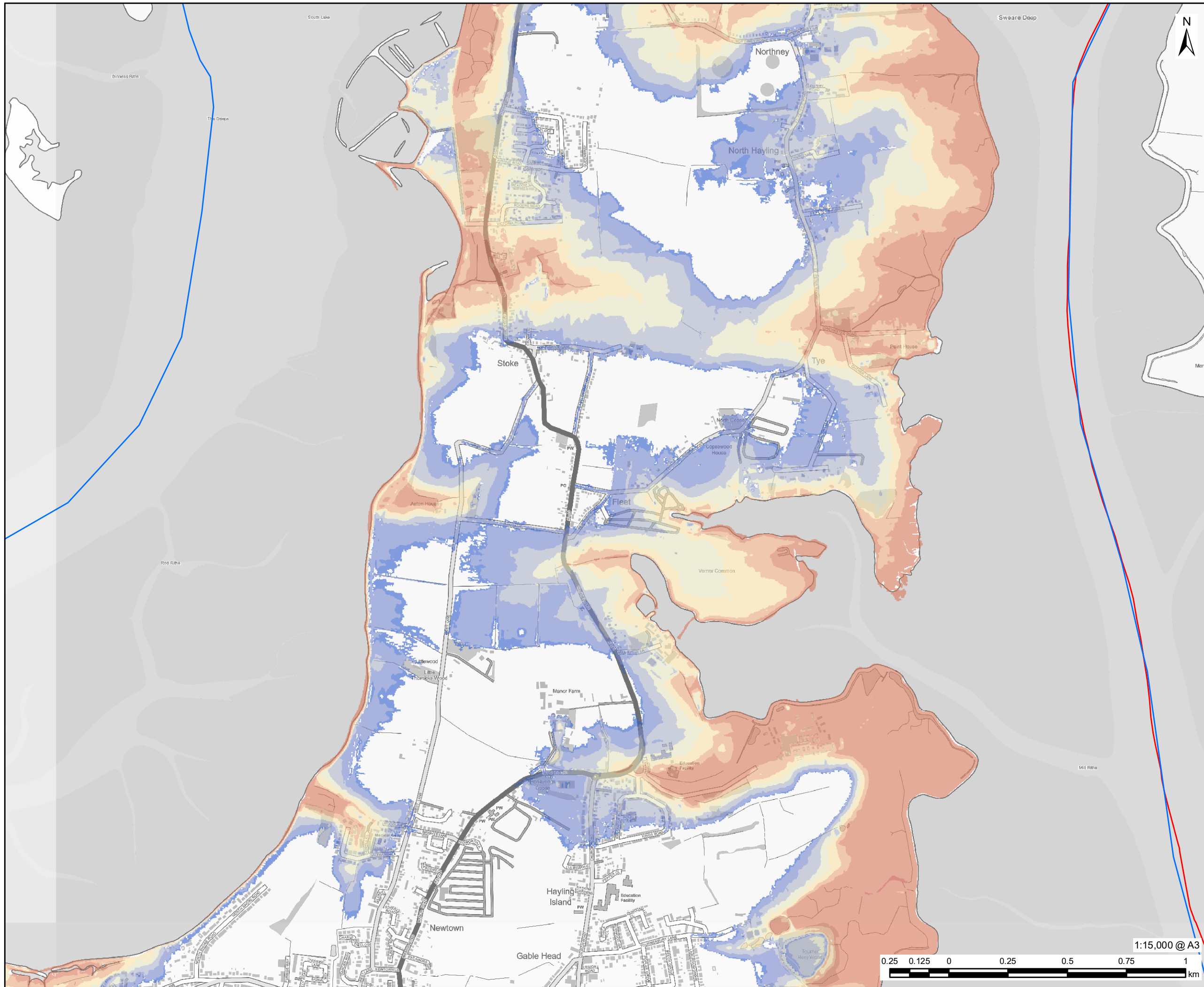
PROJECT NUMBER
60653132

FIGURE TITLE
Maximum Flood Depth: Undefended 1
in 200 Year (0.5% AEP) 2122 Upper
End
Sheet 2 of 5

FIGURE NUMBER
Figure 8



This drawing has been prepared for the use of AECOM's client. It may not be used, modified, reproduced or relied upon by third parties, except as agreed by AECOM or as required by law. AECOM accepts no responsibility, and denies any liability whatsoever, to any party that uses or relies on this drawing without AECOM's express written consent. Do not scale this document. All measurements must be obtained from the stated dimensions.

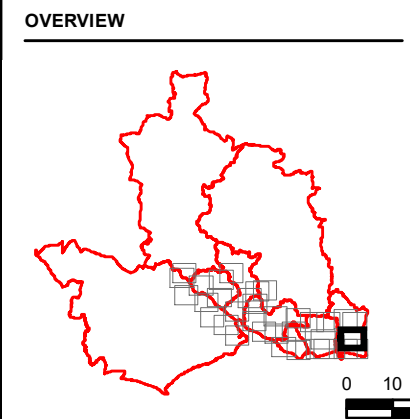


LEGEND

- Local Authority Boundary
- Hayling Island Model Extent

Maximum Flood Depth: Undefended 1 in 200 Year (0.5% AEP) 2122 Upper End

	0.0 - 0.1
	0.1 - 0.5
	0.5 - 1.0
	1.0 - 1.5
	1.5 - 2.0
	2.0 - 2.5
	2.5 - 5.0
	>5.0



NOTES

© Environment Agency copyright and/or database right 2022.
Reproduced from Ordnance Survey digital map data © Crown copyright 2022. All rights reserved. Licence number 0100031673.

This map is intended to provide a strategic overview and should not be used to assess individual properties. Refer to the accompanying SFRA Report for details of the datasets and purpose of their use.

ISSUE PURPOSE
For Information

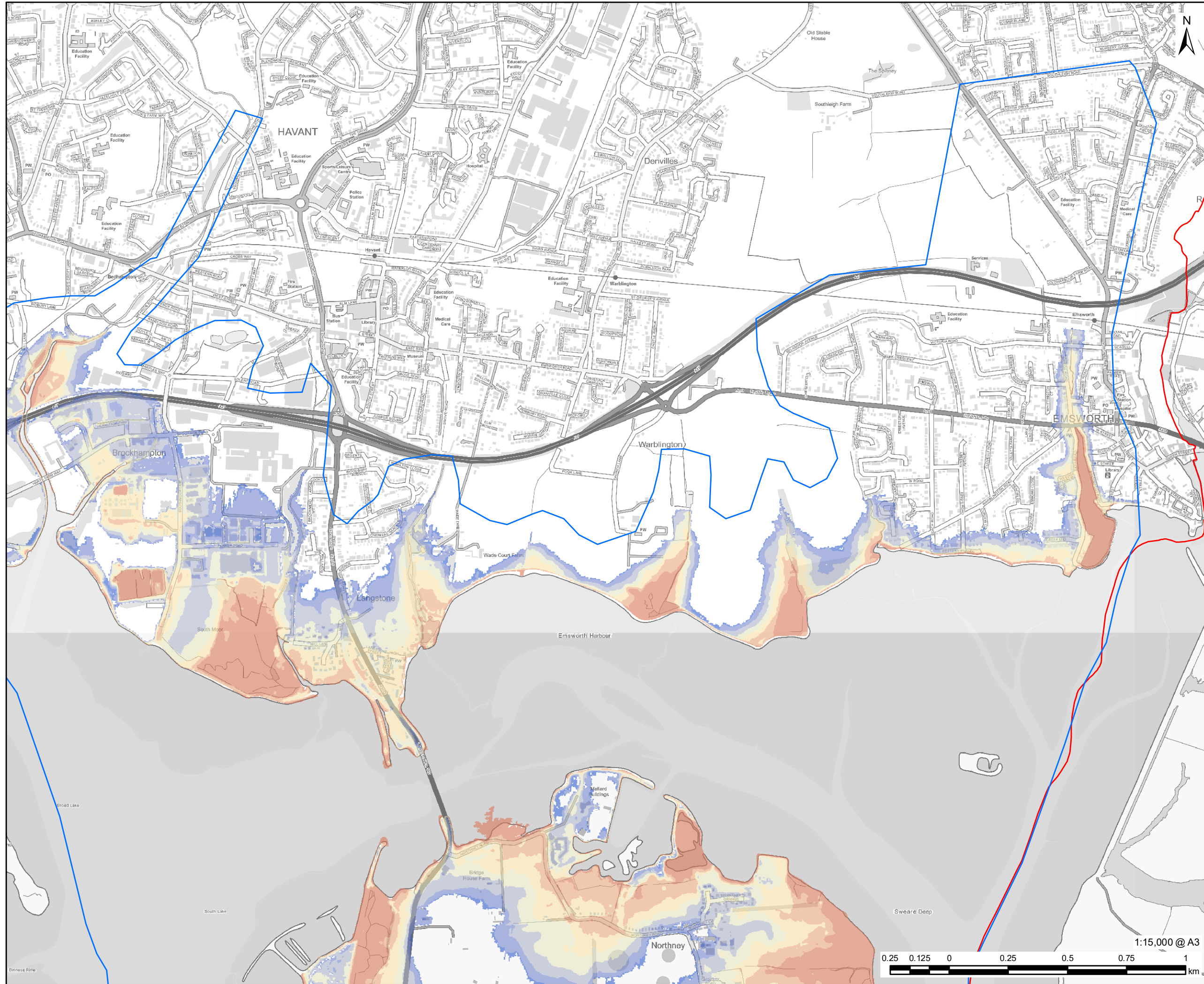
PROJECT NUMBER
60653132

FIGURE TITLE
Maximum Flood Depth: Undefended 1 in 200 Year (0.5% AEP) 2122 Upper End
Sheet 3 of 5

FIGURE NUMBER
Figure 8



This drawing has been prepared for the use of AECOM's client. It may not be used, modified, reproduced or relied upon by third parties, except as agreed by AECOM or as required by law. AECOM accepts no responsibility and denies any liability whatsoever to any party that uses or relies on this drawing without AECOM's express written consent. Do not scale this document. All measurements must be obtained from the stated dimensions.



PROJECT
Partnership for South Hampshire Strategic Flood Risk Assessment

CLIENT
Portsmouth City Council on behalf of Havant Borough Council

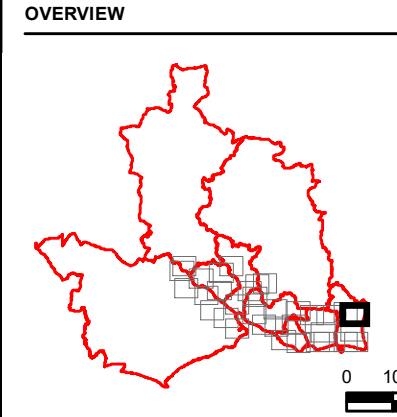
CONSULTANT
AECOM Limited
Sunley House
4 Bedford Park
Croydon, CR0 2AP
www.aecom.com

LEGEND

- Local Authority Boundary
- Haying Island Model Extent

Maximum Flood Depth: Undefended 1 in 200 Year (0.5% AEP) 2122 Upper End

	0.0 - 0.1
	0.1 - 0.5
	0.5 - 1.0
	1.0 - 1.5
	1.5 - 2.0
	2.0 - 2.5
	2.5 - 5.0
	>5.0



NOTES
© Environment Agency copyright and/or database right 2022.
Reproduced from Ordnance Survey digital map data © Crown copyright 2022. All rights reserved. Licence number 0100031673.

This map is intended to provide a strategic overview and should not be used to assess individual properties. Refer to the accompanying SFRA Report for details of the datasets and purpose of their use.

ISSUE PURPOSE
For Information

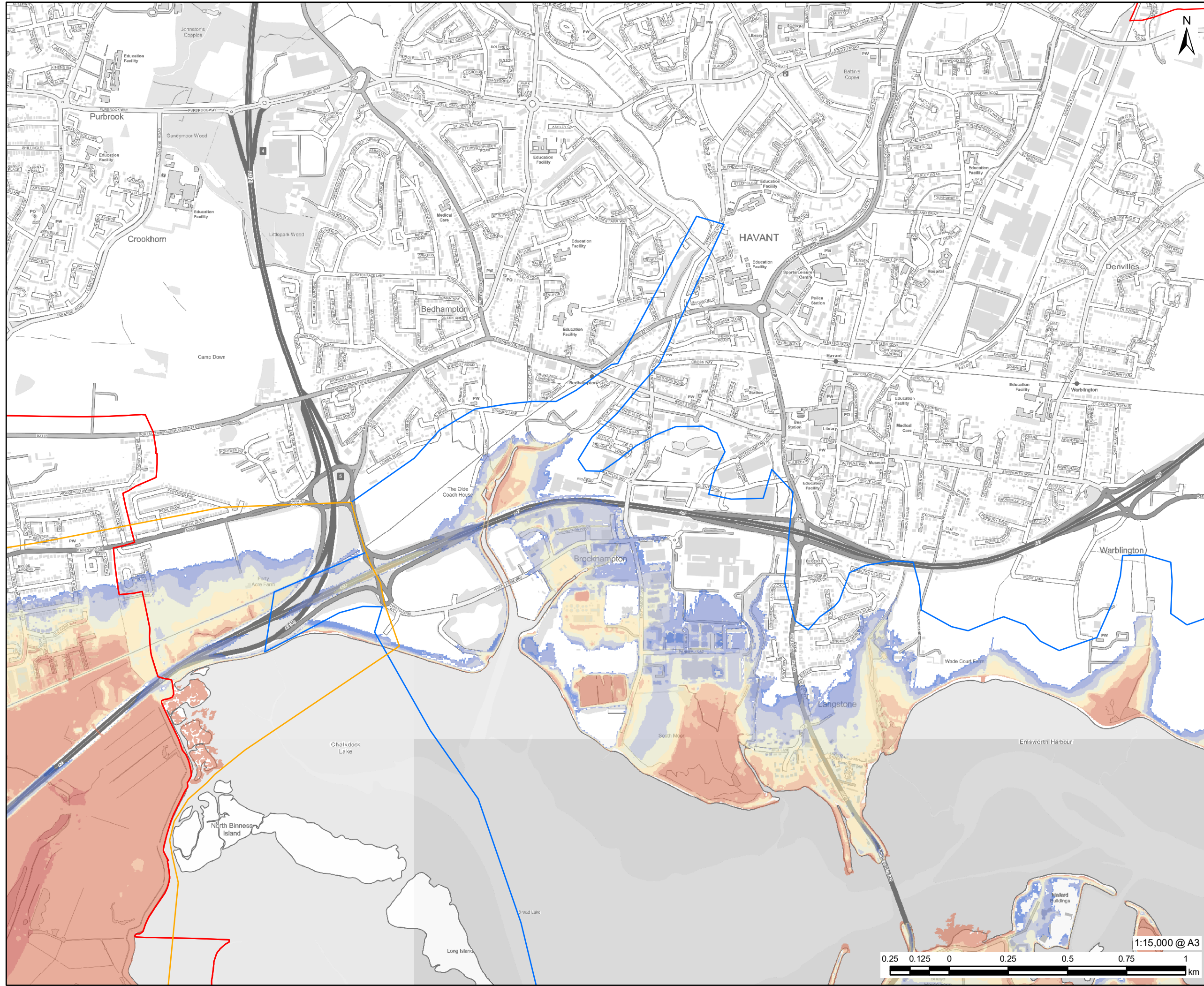
PROJECT NUMBER
60653132

FIGURE TITLE
Maximum Flood Depth: Undefended 1 in 200 Year (0.5% AEP) 2122 Upper End
Sheet 4 of 5

FIGURE NUMBER
Figure 8



This drawing has been prepared for the use of AECOM's client. It may not be used, modified, reproduced or relied upon by third parties, except as agreed by AECOM or as required by law. AECOM accepts no responsibility, and denies any liability whatsoever, to any party that uses or relies on this drawing without AECOM's express written consent. Do not scale this document. All measurements must be obtained from the stated dimensions.



PROJECT
Partnership for South Hampshire Strategic Flood Risk Assessment

CLIENT
Portsmouth City Council on behalf of Havant Borough Council

CONSULTANT
AECOM Limited
Sunley House
4 Bedford Park
Croydon, CR0 2AP
www.aecom.com

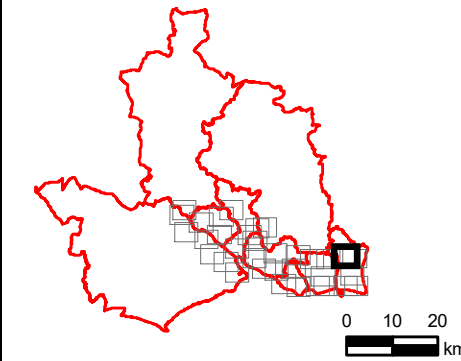
LEGEND

- Local Authority Boundary
- Portsmouth Model Extent
- Haying Island Model Extent

Maximum Flood Depth: Undefended 1 in 200 Year (0.5% AEP) 2122 Upper End

	0.0 - 0.1
	0.1 - 0.5
	0.5 - 1.0
	1.0 - 1.5
	1.5 - 2.0
	2.0 - 2.5
	2.5 - 5.0
	>5.0

OVERVIEW



NOTES
© Environment Agency copyright and/or database right 2022. Reproduced from Ordnance Survey digital map data © Crown copyright 2022. All rights reserved. Licence number 0100031673.

This map is intended to provide a strategic overview and should not be used to assess individual properties. Refer to the accompanying SFRA Report for details of the datasets and purpose of their use.

ISSUE PURPOSE

For Information

PROJECT NUMBER

60653132

FIGURE TITLE

Maximum Flood Depth: Undefended 1 in 200 Year (0.5% AEP) 2122 Upper End

Sheet 5 of 5

FIGURE NUMBER

Figure 8



This drawing has been prepared for the use of AECOM's client. It may not be used, modified, reproduced or relied upon by third parties, except as agreed by AECOM or as required by law. AECOM accepts no responsibility, and denies any liability whatsoever, to any party that uses or relies on this drawing without AECOM's express written consent. Do not scale this document. All measurements must be obtained from the stated dimensions.