

AECOM

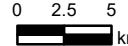
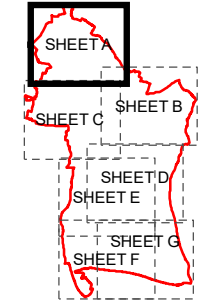
PROJECT
Partnership for South Hampshire Strategic Flood Risk Assessment

CLIENT
Portsmouth City Council on behalf of Havant Borough Council

CONSULTANT
AECOM Limited
Sunley House
4 Bedford Park
Croydon, CR0 2AP
www.aecom.com

- LEGEND**
- Havant Borough Boundary
 - Woodland Constraints
 - Watercourses**
 - Surface
 - Below Surface
 - Working with Natural Processes**
 - Floodplain Woodland Planting Potential
 - Riparian Woodland Planting Potential
 - Wider Catchment Woodland
 - Floodplain Reconnection Potential
 - Runoff Attenuation Features**
 - 3.3% AEP
 - 1% AEP

OVERVIEW



NOTES

© Environment Agency copyright and/or database right 2022.
 Reproduced from Ordnance Survey digital map data © Crown copyright 2022. All rights reserved. Licence number 0100031673.
 Additional layers provided by Hampshire County Council, March, 2022.
 This map is intended to provide a strategic overview and should not be used to assess individual properties. Refer to the accompanying SFRA Report for details of the datasets and purpose of their use.

ISSUE PURPOSE

For Information

PROJECT NUMBER
60653132

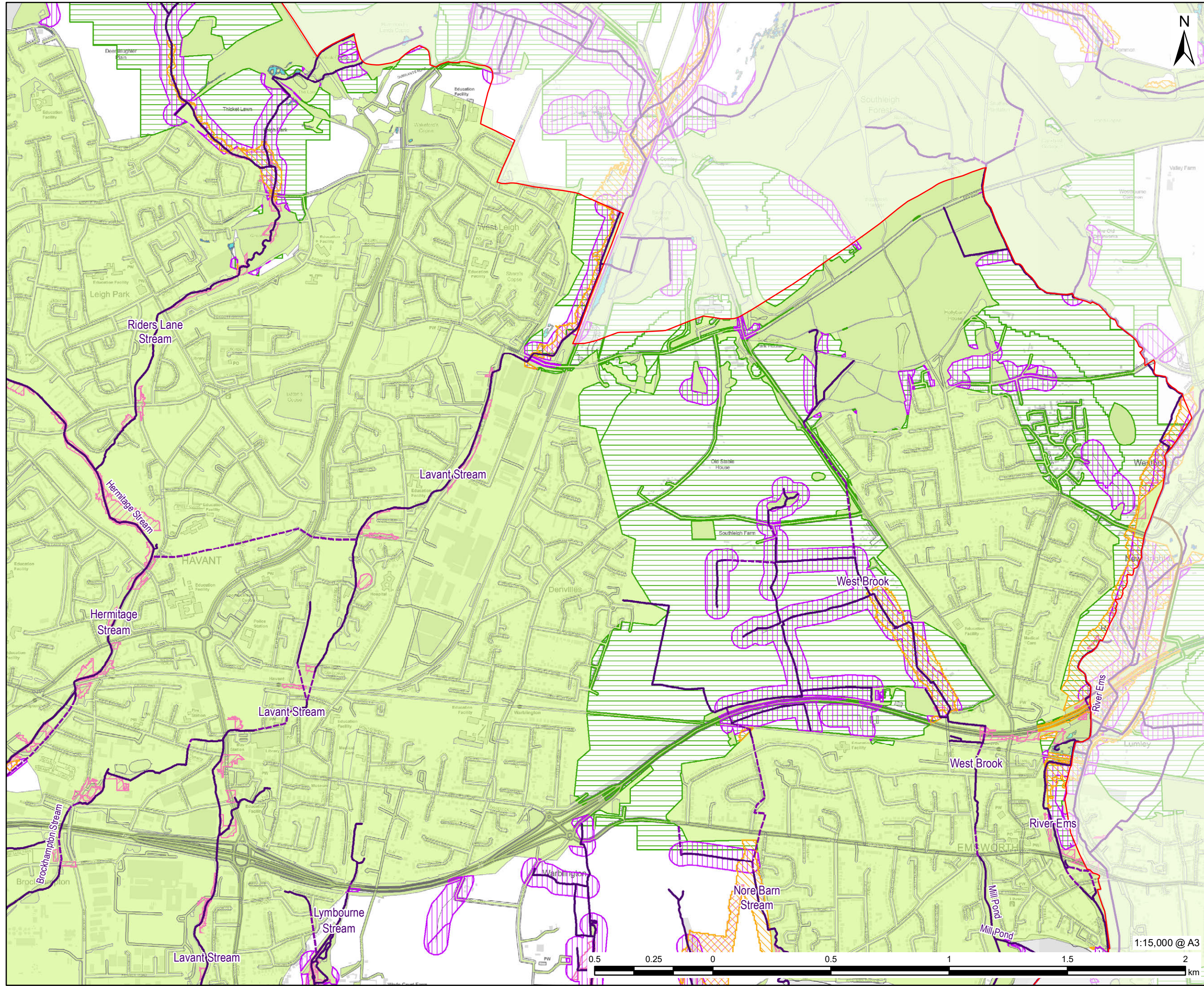
FIGURE TITLE
Opportunities to reduce causes and impacts of flooding
Sheet 1 of 7

FIGURE NUMBER
Figure 8A



1:15,000 @ A3

This drawing has been prepared for the use of AECOM's client. It may not be used, modified, reproduced or relied upon by third parties, except as agreed by AECOM or as required by law. AECOM accepts no responsibility, and denies any liability whatsoever, to any party that uses or relies on this drawing without AECOM's express written consent. Do not scale this document. All measurements must be obtained from the stated dimensions.

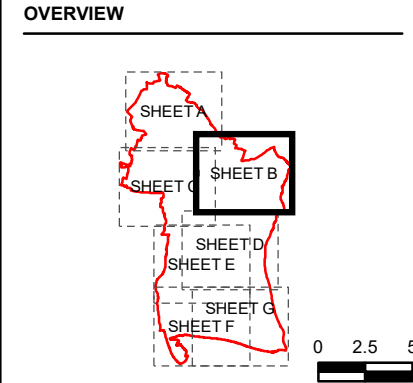


PROJECT
Partnership for South Hampshire Strategic Flood Risk Assessment

CLIENT
Portsmouth City Council on behalf of Havant Borough Council

CONSULTANT
AECOM Limited
Sunley House
4 Bedford Park
Croydon, CR0 2AP
www.aecom.com

- LEGEND**
- Havant Borough Boundary
 - Woodland Constraints
 - Watercourses**
 - Surface
 - Below Surface
 - Above Surface
 - Working with Natural Processes**
 - Floodplain Woodland Planting Potential
 - Riparian Woodland Planting Potential
 - Wider Catchment Woodland
 - Floodplain Reconnection Potential
 - Runoff Attenuation Features**
 - 3.3% AEP
 - 1% AEP



NOTES

© Environment Agency copyright and/or database right 2022.
Reproduced from Ordnance Survey digital map data © Crown copyright 2022. All rights reserved. Licence number 0100031673. Additional layers provided by Hampshire County Council, March, 2022.
This map is intended to provide a strategic overview and should not be used to assess individual properties. Refer to the accompanying SFRA Report for details of the datasets and purpose of their use.

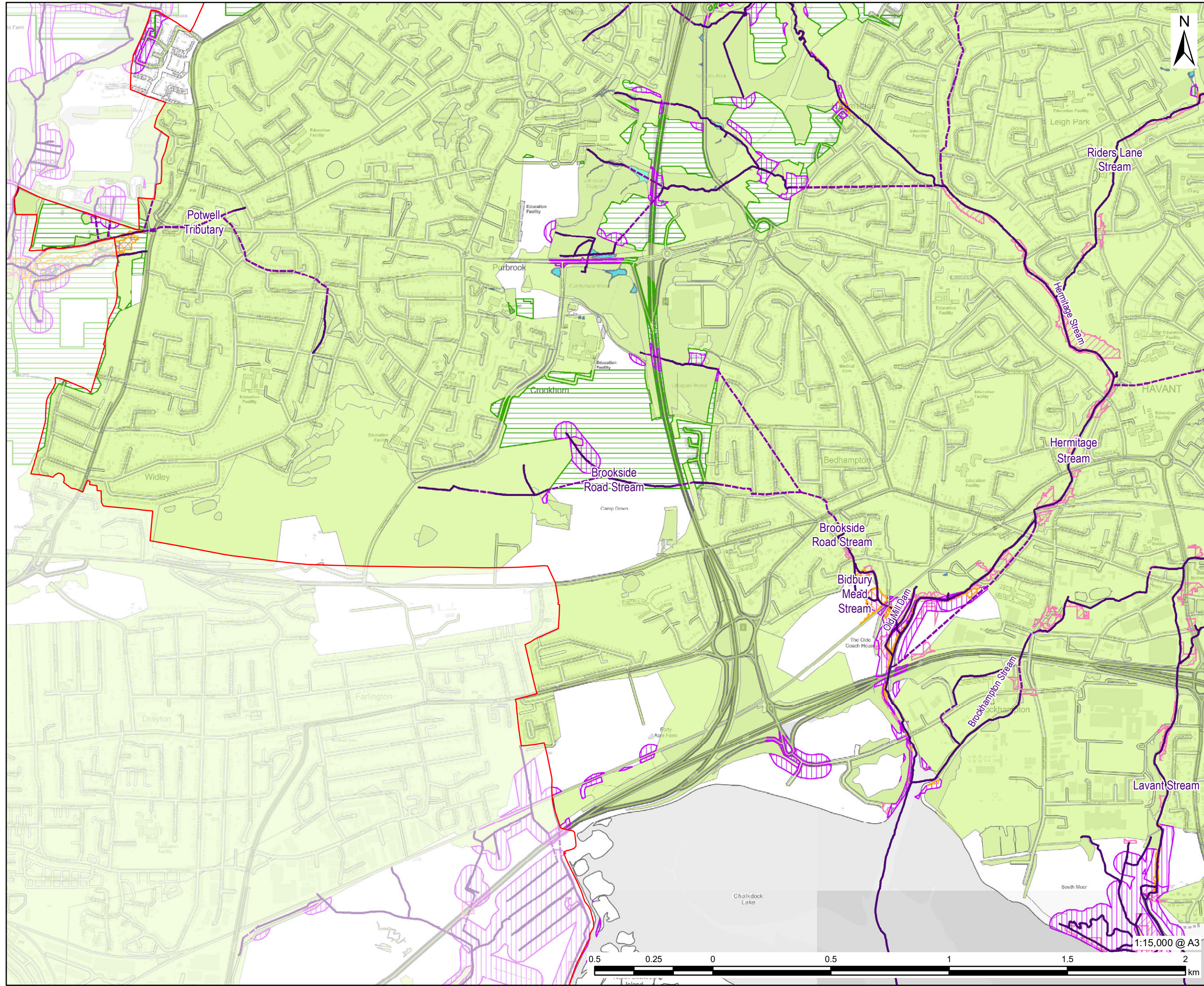
ISSUE PURPOSE
For Information

PROJECT NUMBER
60653132

FIGURE TITLE
Opportunities to reduce causes and impacts of flooding
Sheet 2 of 7

FIGURE NUMBER
Figure 8B

This drawing has been prepared for the use of AECOM's client. It may not be used, modified, reproduced or relied upon by third parties, except as agreed by AECOM or as required by law. AECOM accepts no responsibility, and denies any liability whatsoever, to any party that uses or relies on this drawing without AECOM's express written consent. Do not scale this document. All measurements must be obtained from the stated dimensions.



AECOM

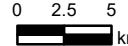
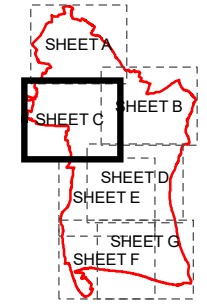
PROJECT
Partnership for South Hampshire Strategic Flood Risk Assessment

CLIENT
Portsmouth City Council on behalf of Havant Borough Council

CONSULTANT
AECOM Limited
Sunley House
4 Bedford Park
Croydon, CR0 2AP
www.aecom.com

- LEGEND**
- Havant Borough Boundary
 - Woodland Constraints
 - Watercourses**
 - Surface
 - Below Surface
 - Working with Natural Processes**
 - Floodplain Woodland Planting Potential
 - Riparian Woodland Planting Potential
 - Wider Catchment Woodland
 - Floodplain Reconnection Potential
 - Runoff Attenuation Features**
 - 3.3% AEP
 - 1% AEP

OVERVIEW



NOTES

© Environment Agency copyright and/or database right 2022.
 Reproduced from Ordnance Survey digital map data © Crown copyright 2022. All rights reserved. Licence number 0100031673.
 Additional layers provided by Hampshire County Council, March, 2022.
 This map is intended to provide a strategic overview and should not be used to assess individual properties. Refer to the accompanying SFRA Report for details of the datasets and purpose of their use.

ISSUE PURPOSE

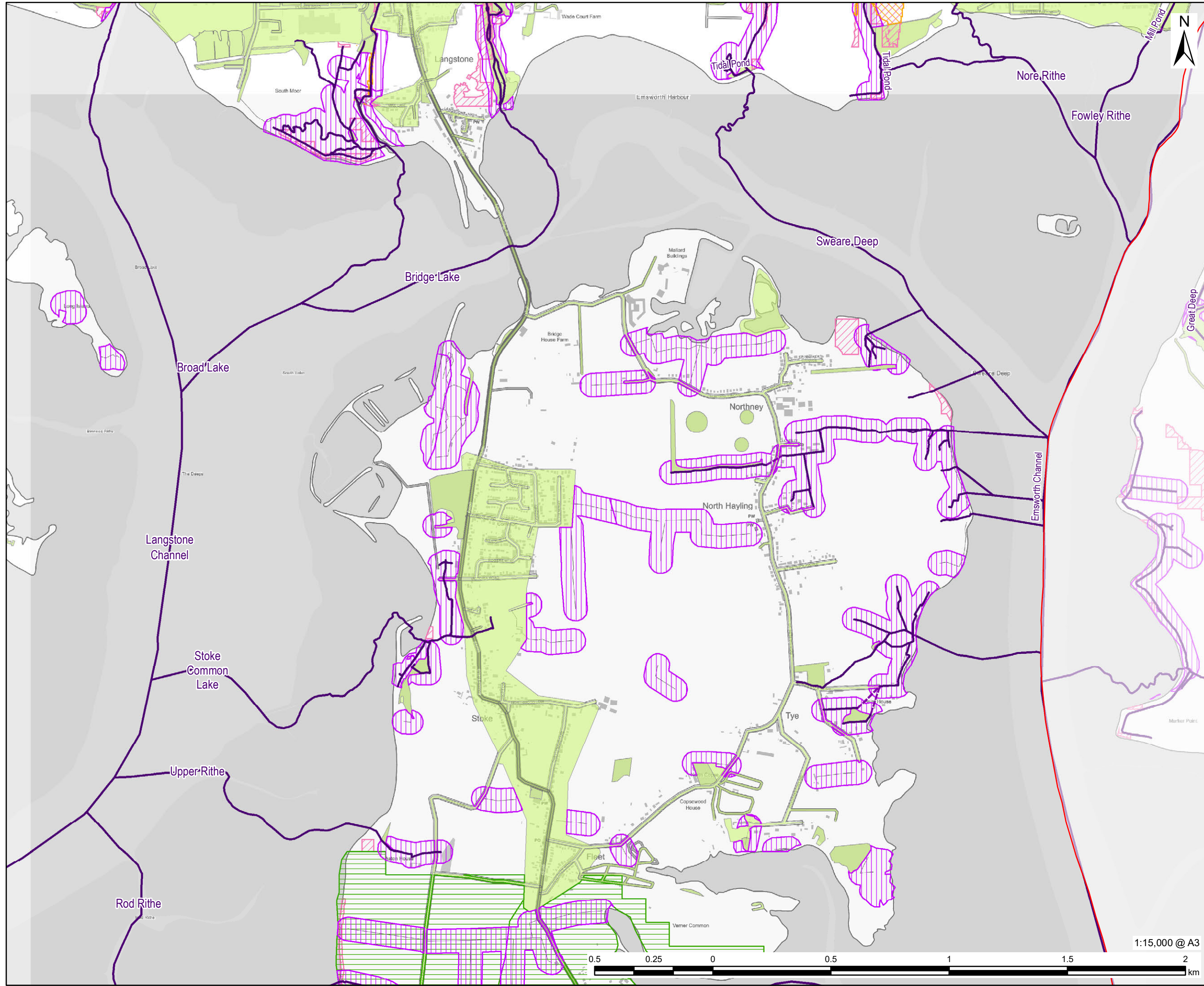
For Information

PROJECT NUMBER
60653132

FIGURE TITLE
Opportunities to reduce causes and impacts of flooding
Sheet 3 of 7

FIGURE NUMBER
Figure 8C

This drawing has been prepared for the use of AECOM's client. It may not be used, modified, reproduced or relied upon by third parties, except as agreed by AECOM or as required by law. AECOM accepts no responsibility, and denies any liability whatsoever, to any party that uses or relies on this drawing without AECOM's express written consent. Do not scale this document. All measurements must be obtained from the stated dimensions.



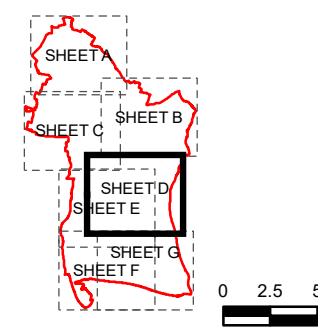
PROJECT
Partnership for South Hampshire Strategic Flood Risk Assessment

CLIENT
Portsmouth City Council on behalf of Havant Borough Council

CONSULTANT
AECOM Limited
Sunley House
4 Bedford Park
Croydon, CR0 2AP
www.aecom.com

- LEGEND**
- Havant Borough Boundary
 - Woodland Constraints
 - Watercourses**
 - Surface
 - Below Surface
 - Working with Natural Processes**
 - Floodplain Woodland Planting Potential
 - Riparian Woodland Planting Potential
 - Wider Catchment Woodland
 - Floodplain Reconnection Potential
 - Runoff Attenuation Features**
 - 3.3% AEP

OVERVIEW



NOTES

© Environment Agency copyright and/or database right 2022.
 Reproduced from Ordnance Survey digital map data © Crown copyright 2022. All rights reserved. Licence number 0100031673.
 Additional layers provided by Hampshire County Council, March, 2022.
 This map is intended to provide a strategic overview and should not be used to assess individual properties. Refer to the accompanying SFRA Report for details of the datasets and purpose of their use.

ISSUE PURPOSE

For Information

PROJECT NUMBER
60653132

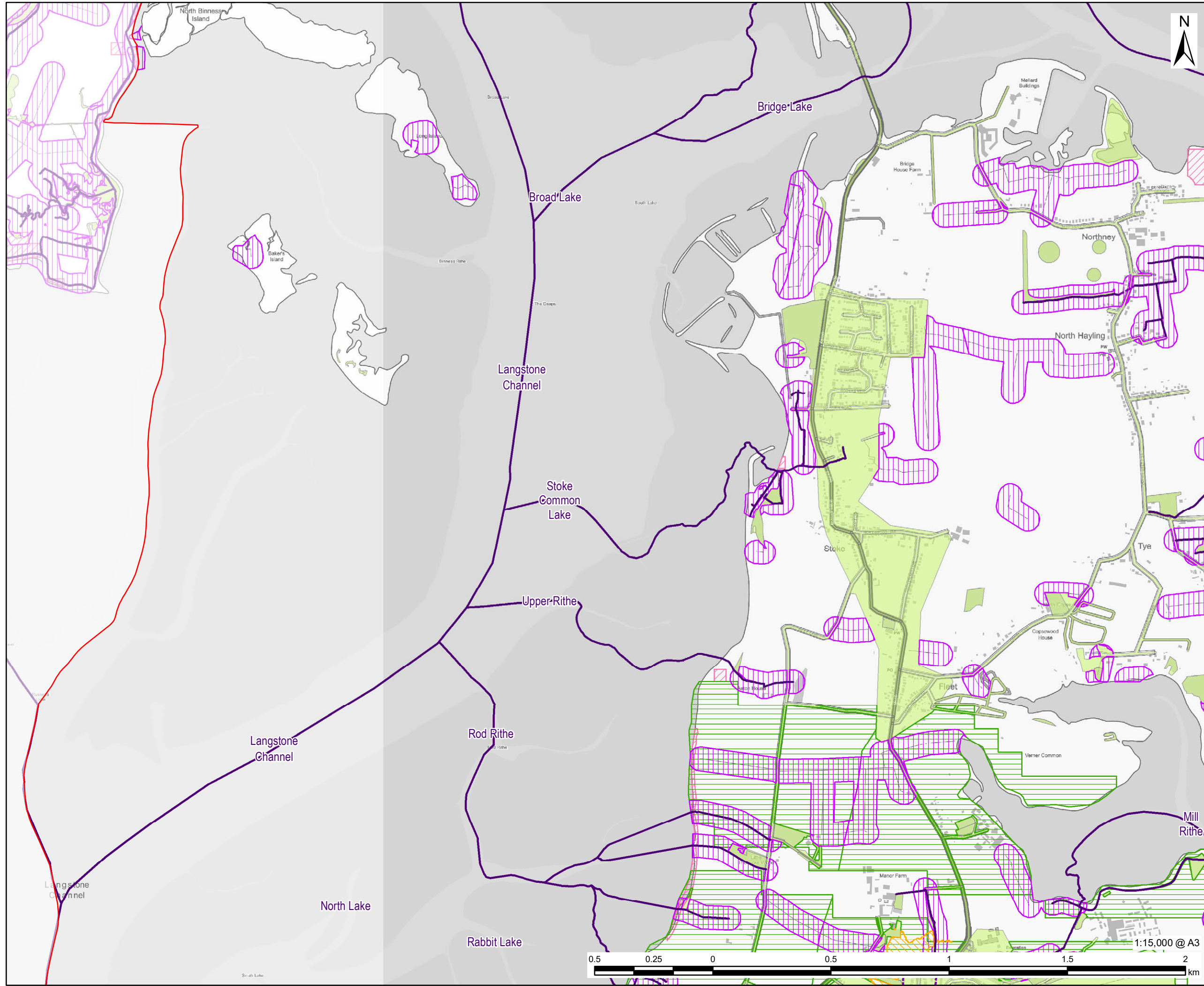
FIGURE TITLE
Opportunities to reduce causes and impacts of flooding
Sheet 4 of 7

FIGURE NUMBER
Figure 8D

1:15,000 @ A3



The drawing has been prepared for the use of AECOM's client. It may not be used, modified, reproduced or relied upon by third parties, except as agreed by AECOM or as required by law. AECOM accepts no responsibility, and denies any liability whatsoever, to any party that uses or relies on this drawing without AECOM's express written consent. Do not scale this document. All measurements must be obtained from the stated dimensions.



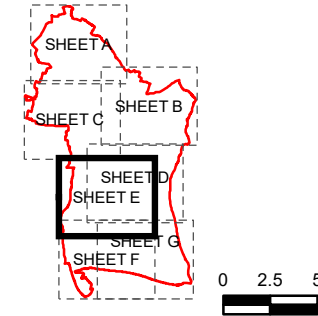
PROJECT
Partnership for South Hampshire
Strategic Flood Risk Assessment

CLIENT
Portsmouth City Council on behalf of
Havant Borough Council

CONSULTANT
AECOM Limited
Sunley House
4 Bedford Park
Croydon, CR0 2AP
www.aecom.com

- LEGEND**
- Havant Borough Boundary
 - Woodland Constraints
 - Watercourses**
 - Surface
 - Below Surface
 - Working with Natural Processes**
 - Floodplain Woodland Planting Potential
 - Riparian Woodland Planting Potential
 - Wider Catchment Woodland
 - Floodplain Reconnection Potential
 - Runoff Attenuation Features**
 - 3.3% AEP

OVERVIEW



NOTES

© Environment Agency copyright and/or database right 2022.
 Reproduced from Ordnance Survey digital map data © Crown copyright 2022. All rights reserved. Licence number 0100031673.
 Additional layers provided by Hampshire County Council, March, 2022.
 This map is intended to provide a strategic overview and should not be used to assess individual properties. Refer to the accompanying SFRA Report for details of the datasets and purpose of their use.

ISSUE PURPOSE
For Information

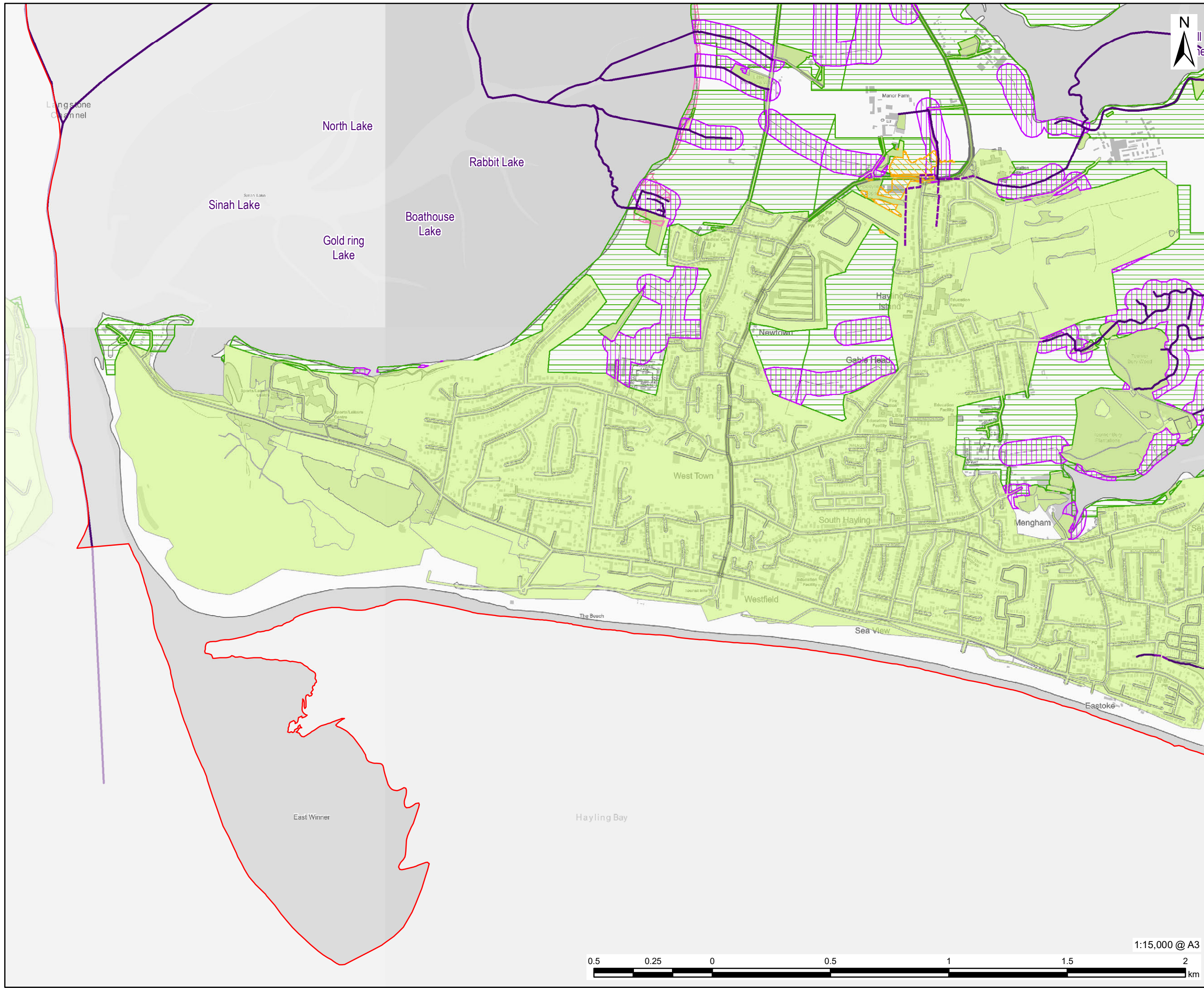
PROJECT NUMBER
60653132

FIGURE TITLE
Opportunities to reduce causes and impacts of flooding
Sheet 5 of 7

FIGURE NUMBER
Figure 8E



The drawing has been prepared for the use of AECOM's client. It may not be used, modified, reproduced or relied upon by third parties, except as agreed by AECOM or as required by law. AECOM accepts no responsibility, and denies any liability whatsoever, to any party that uses or relies on this drawing without AECOM's express written consent. Do not scale this document. All measurements must be obtained from the stated dimensions.



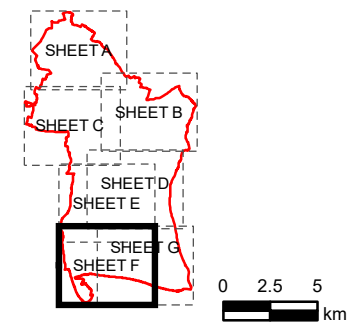
PROJECT
Partnership for South Hampshire
Strategic Flood Risk Assessment

CLIENT
Portsmouth City Council on behalf of
Havant Borough Council

CONSULTANT
AECOM Limited
Sunley House
4 Bedford Park
Croydon, CR0 2AP
www.aecom.com

- LEGEND**
- Havant Borough Boundary
 - Woodland Constraints
 - Watercourses**
 - Surface
 - Below Surface
 - Working with Natural Processes**
 - Floodplain Woodland Planting Potential
 - Riparian Woodland Planting Potential
 - Wider Catchment Woodland
 - Floodplain Reconnection Potential
 - Runoff Attenuation Features**
 - 3.3% AEP

OVERVIEW



NOTES

© Environment Agency copyright and/or database right 2022.
Reproduced from Ordnance Survey digital map data © Crown copyright 2022. All rights reserved. Licence number 0100031673.
Additional layers provided by Hampshire County Council, March, 2022.
This map is intended to provide a strategic overview and should not be used to assess individual properties. Refer to the accompanying SFRA Report for details of the datasets and purpose of their use.

ISSUE PURPOSE

For Information

PROJECT NUMBER

60653132

FIGURE TITLE

Opportunities to reduce causes and impacts of flooding
Sheet 6 of 7

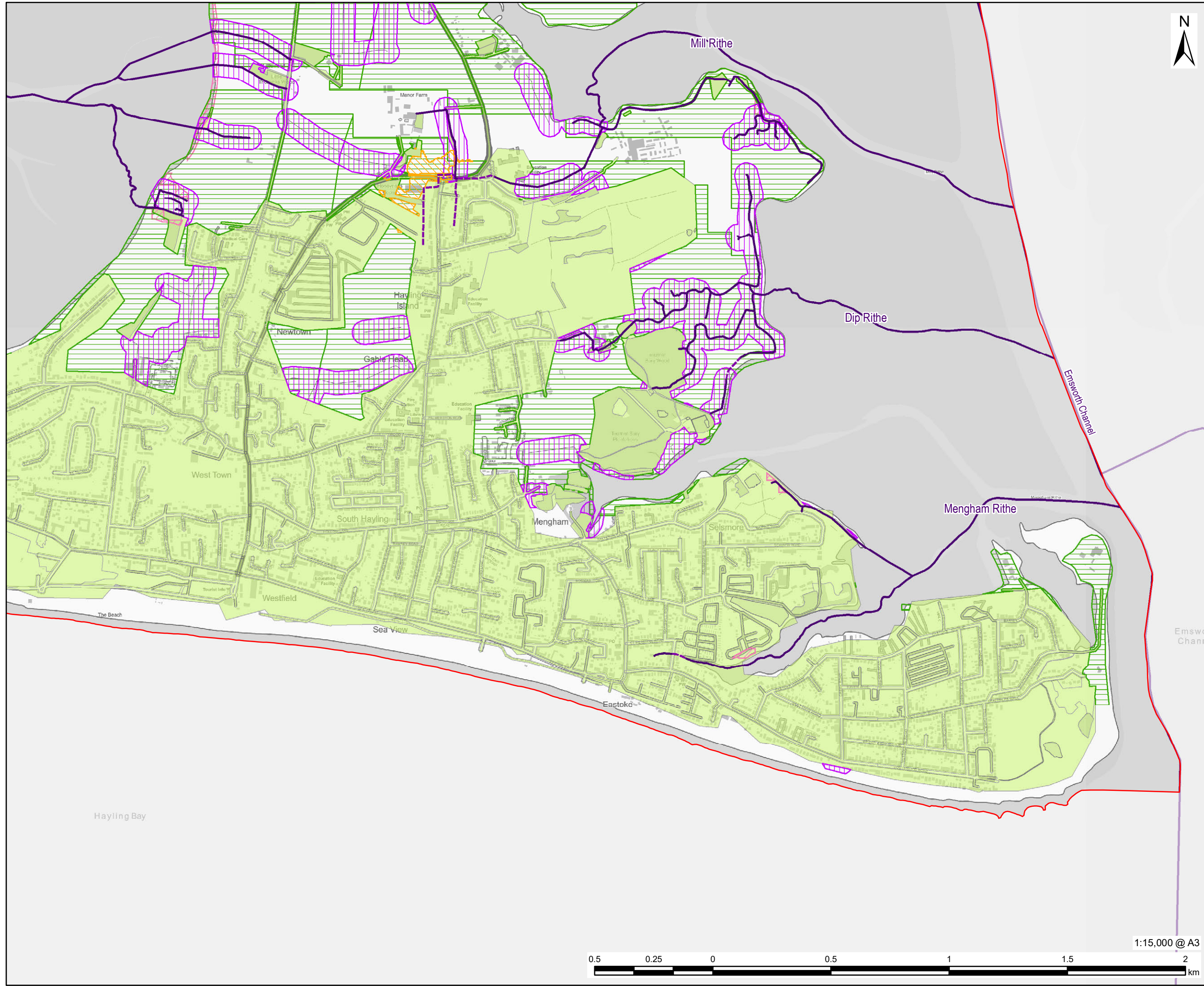
FIGURE NUMBER

Figure 8F

1:15,000 @ A3



The drawing has been prepared for the use of AECOM's client. It may not be used, modified, reproduced or relied upon by third parties, except as agreed by AECOM or as required by law. AECOM accepts no responsibility, and denies any liability whatsoever, to any party that uses or relies on this drawing without AECOM's express written consent. Do not scale this document. All measurements must be obtained from the stated dimensions.



AECOM

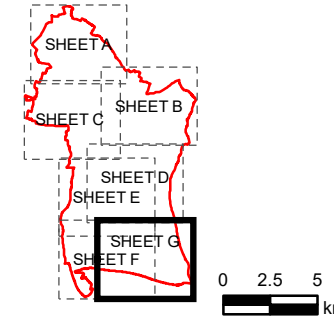
PROJECT
Partnership for South Hampshire
Strategic Flood Risk Assessment

CLIENT
Portsmouth City Council on behalf of
Havant Borough Council

CONSULTANT
AECOM Limited
Sunley House
4 Bedford Park
Croydon, CR0 2AP
www.aecom.com

- LEGEND**
- Havant Borough Boundary
 - Woodland Constraints
 - Watercourses**
 - Surface
 - Below Surface
 - Working with Natural Processes**
 - Floodplain Woodland Planting Potential
 - Riparian Woodland Planting Potential
 - Wider Catchment Woodland
 - Floodplain Reconnection Potential
 - Runoff Attenuation Features**
 - 3.3% AEP

OVERVIEW



NOTES

© Environment Agency copyright and/or database right 2022.
Reproduced from Ordnance Survey digital map data © Crown copyright 2022. All rights reserved. Licence number 0100031673. Additional layers provided by Hampshire County Council, March, 2022.
This map is intended to provide a strategic overview and should not be used to assess individual properties. Refer to the accompanying SFRA Report for details of the datasets and purpose of their use.

ISSUE PURPOSE
For Information

PROJECT NUMBER
60653132

FIGURE TITLE
Opportunities to reduce causes and impacts of flooding
Sheet 7 of 7

FIGURE NUMBER
Figure 8G



This drawing has been prepared for the use of AECOM's client. It may not be used, modified, reproduced or relied upon by third parties, except as agreed by AECOM or as required by law. AECOM accepts no responsibility, and denies any liability whatsoever, to any party that uses or relies on this drawing without AECOM's express written consent. Do not scale this document. All measurements must be obtained from the stated dimensions.