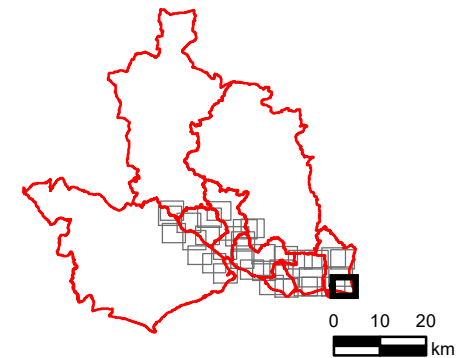


**National Coastal Erosion Risk Mapping (NCERM)**

- Defence Type**
- Embankment
  - Gabions
  - Natural
  - Revetment
  - Seawall
  - Timber Structure
  - Other

**OVERVIEW**



**NOTES**

© Environment Agency copyright and/or database right 2022. Reproduced from Ordnance Survey digital map data © Crown copyright 2022. All rights reserved. Licence number 0100031673.

This map is intended to provide a strategic overview and should not be used to assess individual properties. Refer to the accompanying SFRA Report for details of the datasets and purpose of their use.

**ISSUE PURPOSE**

For Information

**PROJECT NUMBER**

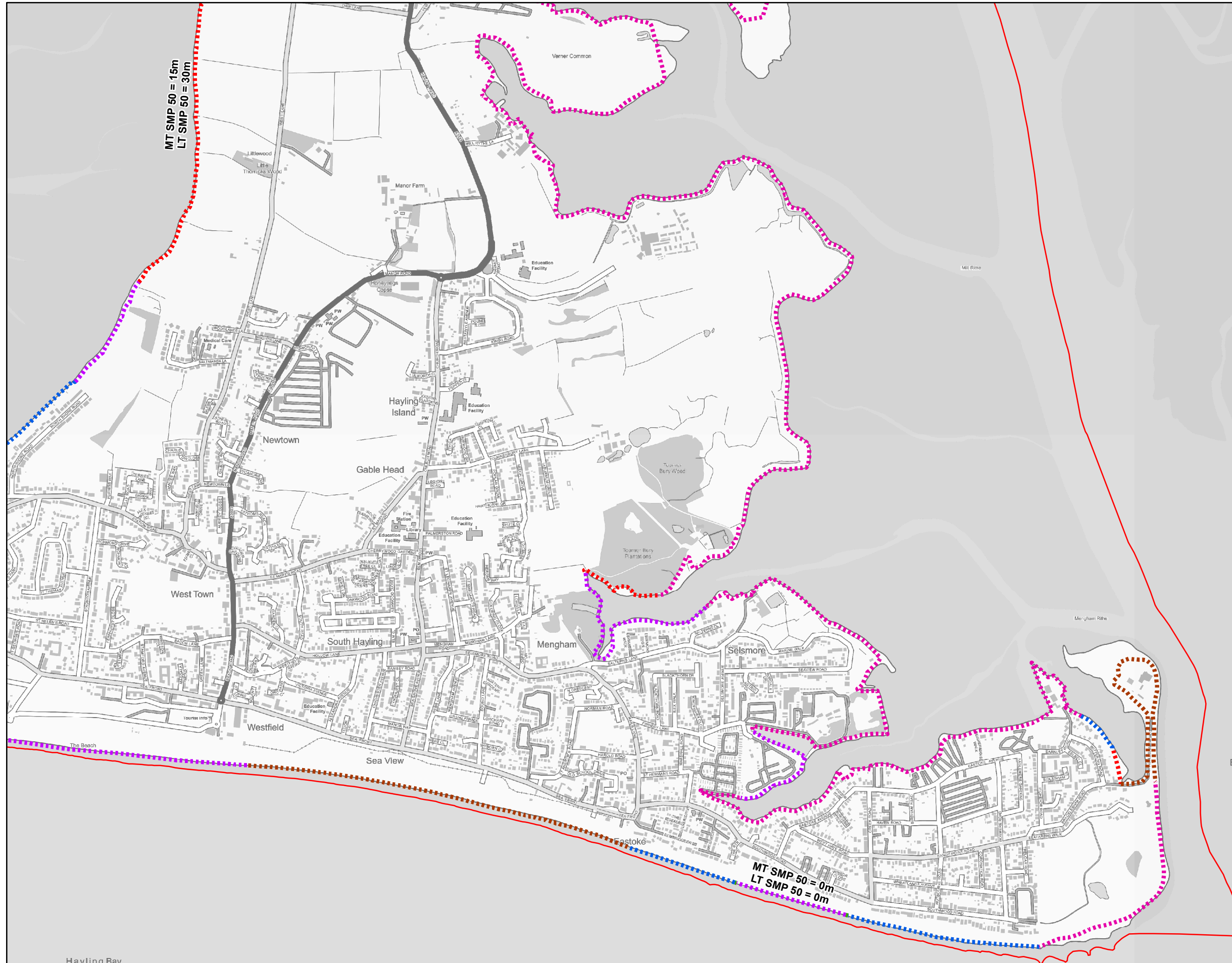
60653132

**FIGURE TITLE**

Coastal Erosion Risk Sheet 1 of 5

**FIGURE NUMBER**

Figure 1

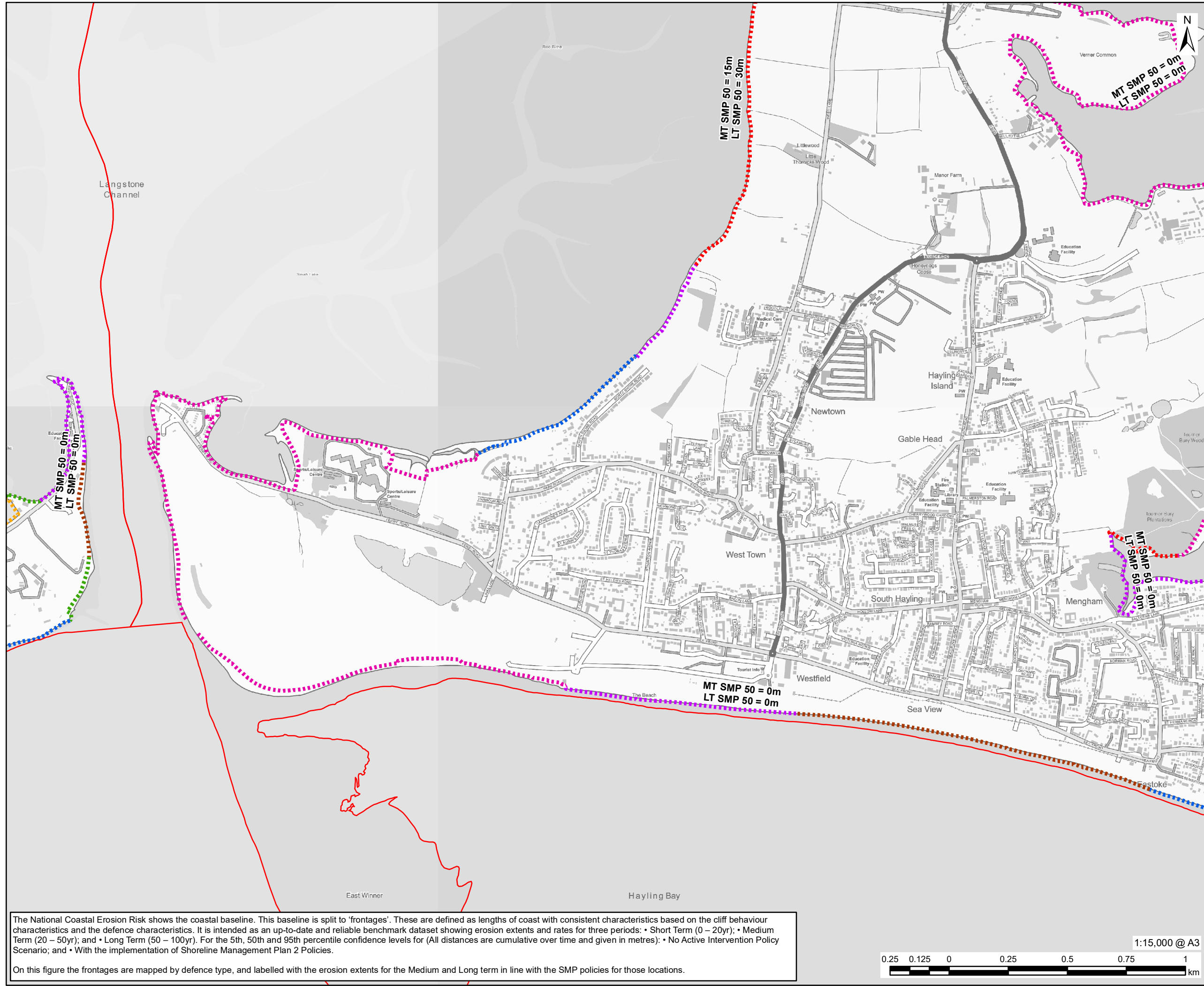


The National Coastal Erosion Risk shows the coastal baseline. This baseline is split to 'frontages'. These are defined as lengths of coast with consistent characteristics based on the cliff behaviour characteristics and the defence characteristics. It is intended as an up-to-date and reliable benchmark dataset showing erosion extents and rates for three periods: • Short Term (0 – 20yr); • Medium Term (20 – 50yr); and • Long Term (50 – 100yr). For the 5th, 50th and 95th percentile confidence levels for (All distances are cumulative over time and given in metres): • No Active Intervention Policy Scenario; and • With the implementation of Shoreline Management Plan 2 Policies.

On this figure the frontages are mapped by defence type, and labelled with the erosion extents for the Medium and Long term in line with the SMP policies for those locations.



1:15,000 @ A3



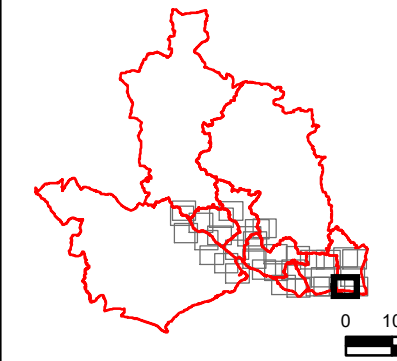
**PROJECT**  
Partnership for South Hampshire Strategic Flood Risk Assessment

**CLIENT**  
Portsmouth City Council on behalf of Havant Borough Council

**CONSULTANT**  
AECOM Limited  
Sunley House  
4 Bedford Park  
Croydon, CR0 2AP  
www.aecom.com

- LEGEND**
- Local Authority Boundary
  - National Coastal Erosion Risk Mapping (NCERM)**
  - Defence Type**
  - Embankment
  - Gabions
  - Natural
  - Revetment
  - Seawall
  - Timber Structure
  - Other

**OVERVIEW**



**NOTES**

© Environment Agency copyright and/or database right 2022. Reproduced from Ordnance Survey digital map data © Crown copyright 2022. All rights reserved. Licence number 0100031673.

This map is intended to provide a strategic overview and should not be used to assess individual properties. Refer to the accompanying SFRA Report for details of the datasets and purpose of their use.

**ISSUE PURPOSE**

For Information

**PROJECT NUMBER**

60653132

**FIGURE TITLE**

Coastal Erosion Risk Sheet 2 of 5

**FIGURE NUMBER**

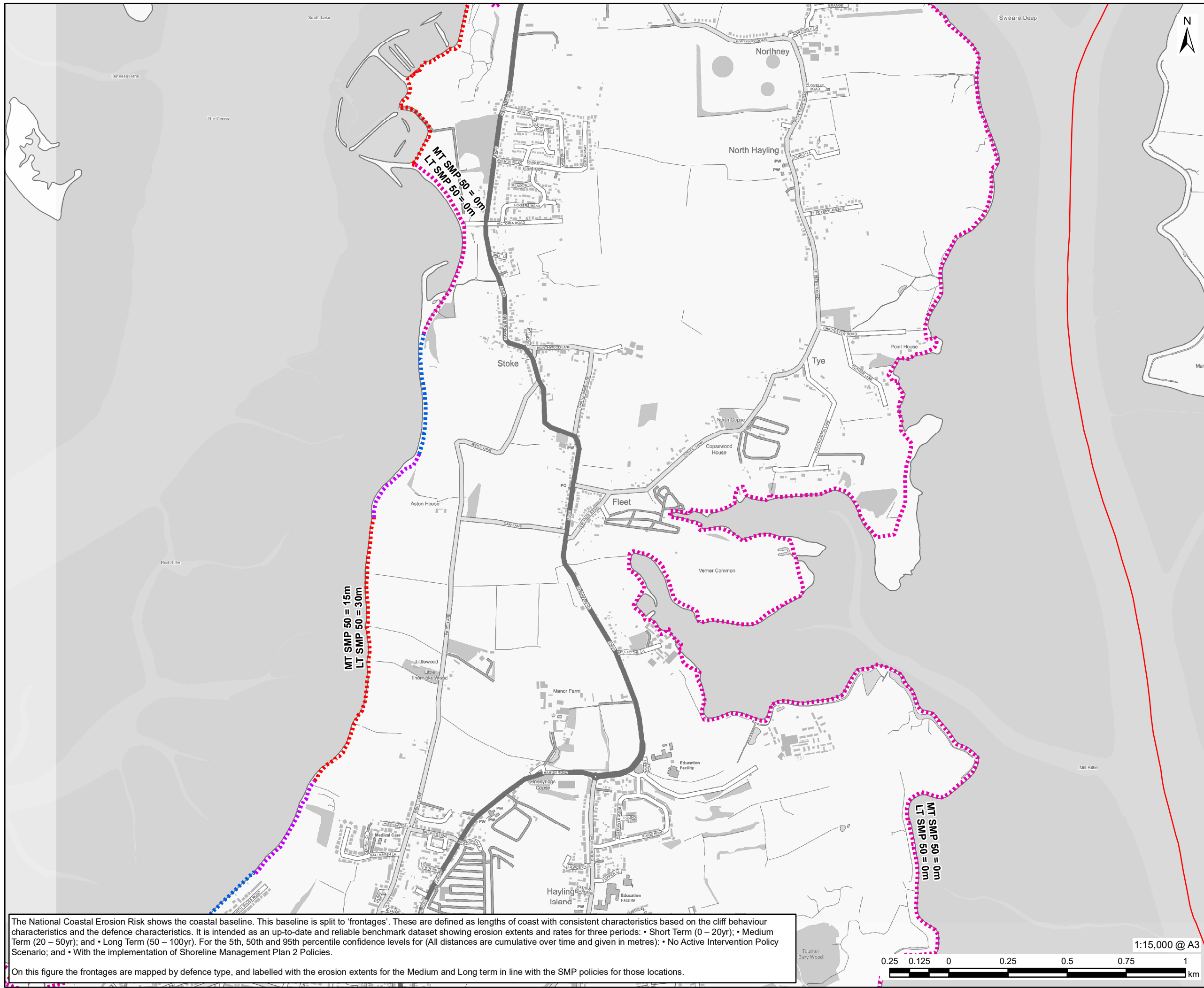
Figure 1

The National Coastal Erosion Risk shows the coastal baseline. This baseline is split to 'frontages'. These are defined as lengths of coast with consistent characteristics based on the cliff behaviour characteristics and the defence characteristics. It is intended as an up-to-date and reliable benchmark dataset showing erosion extents and rates for three periods: • Short Term (0 – 20yr); • Medium Term (20 – 50yr); and • Long Term (50 – 100yr). For the 5th, 50th and 95th percentile confidence levels for (All distances are cumulative over time and given in metres): • No Active Intervention Policy Scenario; and • With the implementation of Shoreline Management Plan 2 Policies.

On this figure the frontages are mapped by defence type, and labelled with the erosion extents for the Medium and Long term in line with the SMP policies for those locations.



This drawing has been prepared for the use of AECOM's client. It may not be used, modified, reproduced or relied upon by third parties, except as agreed by AECOM or as required by law. AECOM accepts no responsibility, and denies any liability whatsoever, to any party that uses or relies on this drawing without AECOM's express written consent. Do not scale this document. All measurements must be obtained from the stated dimensions.



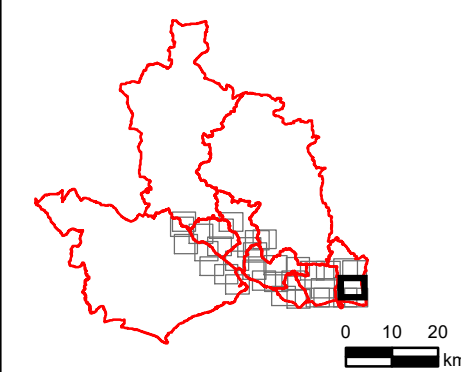
**PROJECT**  
Partnership for South Hampshire Strategic Flood Risk Assessment

**CLIENT**  
Portsmouth City Council on behalf of Havant Borough Council

**CONSULTANT**  
AECOM Limited  
Sunley House  
4 Bedford Park  
Croydon, CR0 2AP  
www.aecom.com

- LEGEND**
- Local Authority Boundary
  - National Coastal Erosion Risk Mapping (NCERM)**
  - Defence Type**
  - Embankment
  - Gabions
  - Natural
  - Revetment
  - Seawall
  - Timber Structure
  - Other

**OVERVIEW**



**NOTES**

© Environment Agency copyright and/or database right 2022.  
Reproduced from Ordnance Survey digital map data © Crown copyright 2022. All rights reserved. Licence number 0100031673.

This map is intended to provide a strategic overview and should not be used to assess individual properties. Refer to the accompanying SFRA Report for details of the datasets and purpose of their use.

**ISSUE PURPOSE**

For Information

**PROJECT NUMBER**

60653132

**FIGURE TITLE**

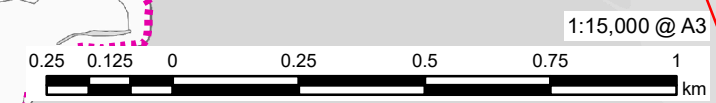
Coastal Erosion Risk  
Sheet 3 of 5

**FIGURE NUMBER**

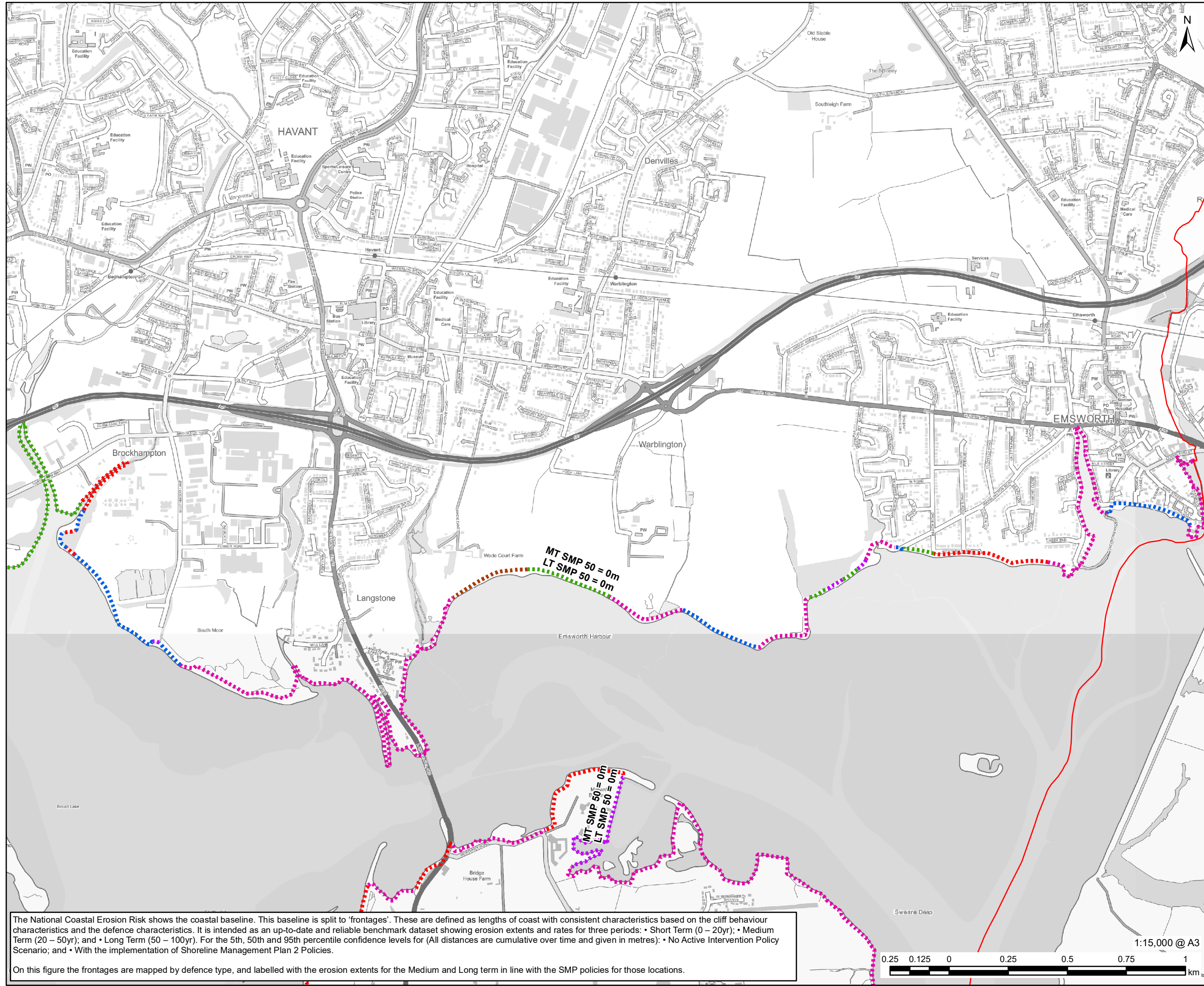
Figure 1

The National Coastal Erosion Risk shows the coastal baseline. This baseline is split to 'frontages'. These are defined as lengths of coast with consistent characteristics based on the cliff behaviour characteristics and the defence characteristics. It is intended as an up-to-date and reliable benchmark dataset showing erosion extents and rates for three periods: • Short Term (0 – 20yr); • Medium Term (20 – 50yr); and • Long Term (50 – 100yr). For the 5th, 50th and 95th percentile confidence levels for (All distances are cumulative over time and given in metres): • No Active Intervention Policy Scenario; and • With the implementation of Shoreline Management Plan 2 Policies.

On this figure the frontages are mapped by defence type, and labelled with the erosion extents for the Medium and Long term in line with the SMP policies for those locations.



This drawing has been prepared for the use of AECOM's client. It may not be used, modified, reproduced or relied upon by third parties, except as agreed by AECOM or as required by law. AECOM accepts no responsibility, and denies any liability whatsoever, to any party that uses or relies on this drawing without AECOM's express written consent. Do not scale this document. All measurements must be obtained from the stated dimensions.



The National Coastal Erosion Risk shows the coastal baseline. This baseline is split to 'frontages'. These are defined as lengths of coast with consistent characteristics based on the cliff behaviour characteristics and the defence characteristics. It is intended as an up-to-date and reliable benchmark dataset showing erosion extents and rates for three periods: • Short Term (0 – 20yr); • Medium Term (20 – 50yr); and • Long Term (50 – 100yr). For the 5th, 50th and 95th percentile confidence levels for (All distances are cumulative over time and given in metres): • No Active Intervention Policy Scenario; and • With the implementation of Shoreline Management Plan 2 Policies.

On this figure the frontages are mapped by defence type, and labelled with the erosion extents for the Medium and Long term in line with the SMP policies for those locations.



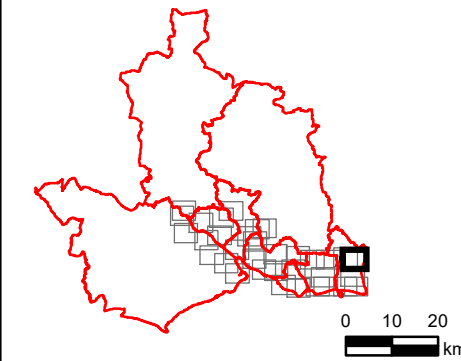
**PROJECT**  
Partnership for South Hampshire Strategic Flood Risk Assessment

**CLIENT**  
Portsmouth City Council on behalf of Havant Borough Council

**CONSULTANT**  
AECOM Limited  
Sunley House  
4 Bedford Park  
Croydon, CR0 2AP  
www.aecom.com

- LEGEND**
- Local Authority Boundary
  - National Coastal Erosion Risk Mapping (NCERM)**
  - Defence Type**
  - - - Embankment
  - - - Gabions
  - - - Natural
  - - - Revetment
  - - - Seawall
  - - - Timber Structure
  - - - Other

**OVERVIEW**



**NOTES**

© Environment Agency copyright and/or database right 2022.  
Reproduced from Ordnance Survey digital map data © Crown copyright 2022. All rights reserved. Licence number 0100031673.

This map is intended to provide a strategic overview and should not be used to assess individual properties. Refer to the accompanying SFRA Report for details of the datasets and purpose of their use.

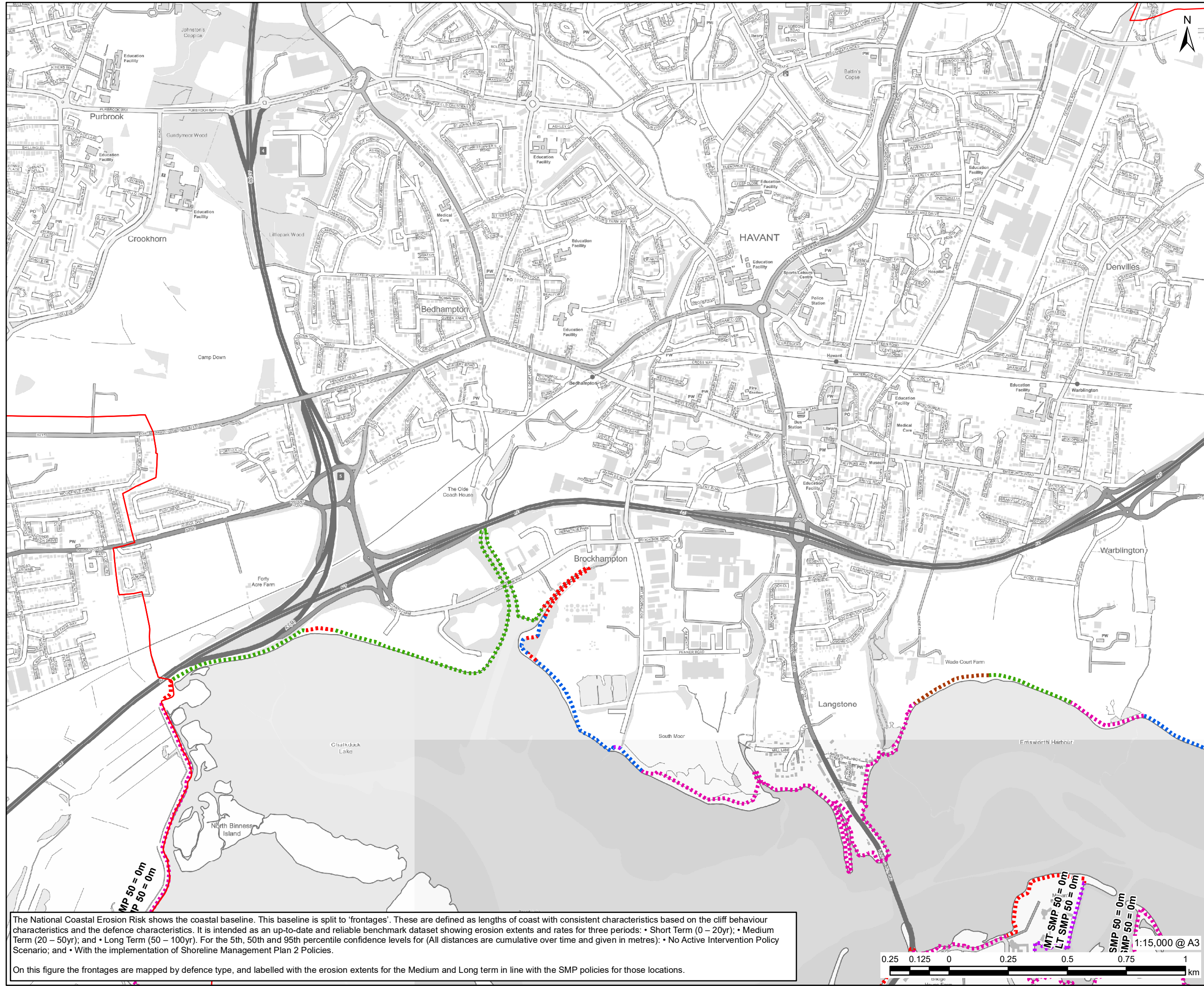
**ISSUE PURPOSE**  
For Information

**PROJECT NUMBER**  
60653132

**FIGURE TITLE**  
Coastal Erosion Risk  
Sheet 4 of 5

**FIGURE NUMBER**  
Figure 1

This drawing has been prepared for the use of AECOM's client. It may not be used, modified, reproduced or relied upon by third parties, except as agreed by AECOM or as required by law. AECOM accepts no responsibility, and denies any liability whatsoever, to any party that uses or relies on this drawing without AECOM's express written consent. Do not scale this document. All measurements must be obtained from the stated dimensions.



The National Coastal Erosion Risk shows the coastal baseline. This baseline is split to 'frontages'. These are defined as lengths of coast with consistent characteristics based on the cliff behaviour characteristics and the defence characteristics. It is intended as an up-to-date and reliable benchmark dataset showing erosion extents and rates for three periods: • Short Term (0 – 20yr); • Medium Term (20 – 50yr); and • Long Term (50 – 100yr). For the 5th, 50th and 95th percentile confidence levels for (All distances are cumulative over time and given in metres): • No Active Intervention Policy Scenario; and • With the implementation of Shoreline Management Plan 2 Policies.

On this figure the frontages are mapped by defence type, and labelled with the erosion extents for the Medium and Long term in line with the SMP policies for those locations.



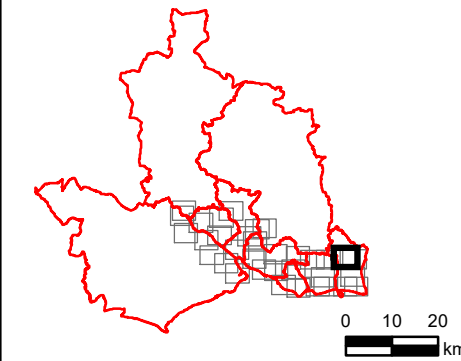
**PROJECT**  
Partnership for South Hampshire Strategic Flood Risk Assessment

**CLIENT**  
Portsmouth City Council on behalf of Havant Borough Council

**CONSULTANT**  
AECOM Limited  
Sunley House  
4 Bedford Park  
Croydon, CR0 2AP  
www.aecom.com

- LEGEND**
- Local Authority Boundary
  - National Coastal Erosion Risk Mapping (NCERM)**
  - Defence Type**
  - - - Embankment
  - - - Gabions
  - - - Natural
  - - - Revetment
  - - - Seawall
  - - - Timber Structure
  - - - Other

**OVERVIEW**



**NOTES**

© Environment Agency copyright and/or database right 2022.  
Reproduced from Ordnance Survey digital map data © Crown copyright 2022. All rights reserved. Licence number 0100031673.

This map is intended to provide a strategic overview and should not be used to assess individual properties. Refer to the accompanying SFRA Report for details of the datasets and purpose of their use.

**ISSUE PURPOSE**  
For Information

**PROJECT NUMBER**  
60653132

**FIGURE TITLE**  
Coastal Erosion Risk  
Sheet 5 of 5

**FIGURE NUMBER**  
Figure 1

This drawing has been prepared for the use of AECOM's client. It may not be used, modified, reproduced or relied upon by third parties, except as agreed by AECOM or as required by law. AECOM accepts no responsibility, and denies any liability whatsoever, to any party that uses or relies on this drawing without AECOM's express written consent. Do not scale this document. All measurements must be obtained from the stated dimensions.